

ENCLOSURES, DISTRIBUTION PANELS & ACCESSORIES





SECTION CONTENTS

Command Center™ Enclosures1.2 - 1.4

Voice & Data Distribution Panels1.5 - 1.6

RF Distribution Panels1.7

Accessories

MAX™ Module Panel Kits1.8

CT® Couplers for Distribution Panels1.8

DSL Kit1.9

Command Center™ Lock Kit1.9

Reusable Hook & Loop Cable Managers1.9

Enclosure Grommets1.9

Replacement Panel Ny-Latches1.9

**10 INCH
COMMAND CENTER™**

The 10 inch Command Center™ enclosure is ideal for distribution of voice, video, and data services in smaller residential installations. Siemon offers a variety of optional distribution panels, which snap into the enclosure and deliver a variety of communications services throughout the home. For the most common small residential configuration, Siemon offers a pre-assembled kit (HC-K1-CK-80) which serves up to 11 voice, 6 data, and 8 RF outlets. This cost-effective enclosure enables compliance with ANSI/TIA/EIA 570-A Grade 1 & 2 specifications for residential cabling. Its rugged steel construction and removable cover protect contents and connections from damage. The unit can be mounted between 16 inch on center studs or on a flat surface.



HC-K1-CK-80 Shown

FEATURES:

- Nine standard two inch knockouts for easy cable entry and management
- Cutouts for a single gang electrical box to supply dedicated 110v power for active equipment
- Plastic grommets included to protect cables entering the enclosure
- Factory-installed lock

10 INCH COMMAND CENTER™ PANEL CAPACITY:

- Up To Two Full Size Distribution Panels or
- One Full Size Distribution Panel and Two Vertical Panels

10 INCH COMMAND CENTER™

Part #	Description
HC-ENCL-10-80.	10 inch enclosure with factory-installed lock, cover and provisions for a single gang electrical box. Light ivory
HC-K1-CK-80.	10 inch enclosure kit with factory-installed lock, cover, one 6-port Data/Voice Distribution Panel (HC-110-JP6-80), and one 1 x 8 RF Vertical Distribution Panel (HC-RF-8VS-80). Light ivory



height: 254mm (10 in.),
width: 368.3mm (14.5 in.),
depth: 119.4mm (4.7 in.)



HC-ENCL-10-80

RELATED PRODUCTS DISTRIBUTION PANELS PAGES 1.5 — 1.7

20 INCH COMMAND CENTER™

The 20 inch Command Center™ enclosure is designed to distribute voice, video, and data services in mid-size residential installations. It accommodates multiple Siemon distribution panels, providing the ability to serve a greater number of multimedia outlets. For the typical mid-size residential application, Siemon offers a pre-assembled kit (HC-K2-CK-AJLN-80), which serves up to 23 voice, 12 data, and 8 RF outlets.

This full-featured enclosure is standards compliant with all '570-A Grade 1 & 2 specifications. Its rugged steel construction and removable cover protect contents and connections from damage. The unit can be mounted between 16 inch on center studs or on a flat surface.

FEATURES:

- Thirteen standard two inch knockouts for easy cable entry and management
- Cutouts for a single gang electrical box to supply dedicated 110v power for active equipment
- Plastic grommets included to protect cables entering the enclosure
- Knockout on the cover for the optional Command Center™ Lock Kit (see page 1.9)



HC-K2-AJLN-80 Shown

20 INCH COMMAND CENTER™ PANEL CAPACITY:

- Up To Three Full Size Distribution Panels
- One Half Size Distribution Panel
- Two Half Size RF Panels (Splitter and Amp)

20 INCH COMMAND CENTER™

Part #	Description
HC-ENCL-20-80.....	20 inch enclosure with cover and provisions for a single gang electrical box. Light ivory
HC-K2-AJLN-80	20 inch enclosure kit with cover, one S110® Voice Distribution Panel (HC-110-80), one 12-port Data Distribution Panel with 12 category 5e modular jacks (HC-MX5-FK-01), 4 modular cords (HC-MOD12-80) and one 1 x 8 RF Distribution Panel (HC-RF-8HS-80). Light ivory



*height: 508mm (20 in.),
width: 368.3mm (14.5 in.),
depth: 119.4mm (4.7 in.)*



HC-ENCL-20-80

RELATED PRODUCTS DISTRIBUTION PANELS PAGES 1.5 — 1.7, LOCK KIT PAGE 1.9

36 INCH COMMAND CENTER™

The 36 inch Command Center™ enclosure is designed to distribute voice, video, and data services in large residential installations. It accommodates multiple Siemon distribution panels, providing the ability to serve a greater number of multimedia outlets. Its larger size will easily accommodate active equipment such as mini gateways, routers, and hubs. This full-featured enclosure is standards compliant with all '570-A Grade 1 & 2 specifications. Its rugged steel construction and removable cover protect contents and connections from damage. The unit can be mounted between 16 inch on center studs or on a flat surface.

FEATURES:

- Fifteen standard two inch knockouts for easy cable entry and management
- Cutouts for two single gang electrical boxes to supply dedicated 110v power for active equipment
- Plastic grommets included to protect cables entering the enclosure
- Knockout on the cover for the optional Command Center™ Lock Kit (see page 1.9)



HC-ENCL-36-80 Shown With Optional Distribution Panels

36 INCH COMMAND CENTER™ PANEL CAPACITY:

- Up To Seven Full Size Distribution Panels
- One Half Size Distribution Panel
- Two Half Size RF Panels (Splitter and Amp)

36 INCH COMMAND CENTER™

Part #	Description
HC-ENCL-36-80.	36 inch enclosure with cover and provisions for two single gang electrical boxes. Light ivory <i>height: 914.4mm (36 in.), width: 368.3mm (14.5 in.), depth: 119.4mm (4.7 in.)</i>



RELATED PRODUCTS DISTRIBUTION PANELS PAGES 1.5 — 1.7, LOCK KIT PAGE 1.9

S110® VOICE DISTRIBUTION PANEL (FULL SIZE)



The full size S110® distribution panel utilizes the industry standard category 5e S110® connecting block. For use in 10, 20, and 36 inch Command Centers™, it provides unparalleled cross-connect flexibility. Any incoming phone line can be assigned to any cable pair at any outlet location within the home. The HC-110-80 can distribute up to 4 incoming lines to up to 23 locations.

Part #	Description
HC-110-80	Siemon 100-pair S110® field termination block includes two CO jacks, (one for interfacing with security systems [RJ31X] and one for use as an Auxiliary Disconnect Outlet [ADO]), and an ADO patch cord. Mounting, connecting, and labeling hardware included. Light ivory



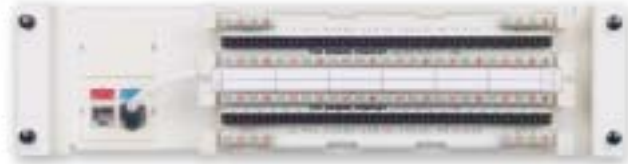
RELATED PRODUCTS DSL KIT PAGE 1.9, CT® COUPLERS 1.8, PATCH CORDS PAGE 3.2, TERMINATION TOOLS PAGE 4.5

DISCONNECT PHONE BRIDGE VOICE PANEL (FULL SIZE)



The full size Disconnect Phone Bridge Panel is the perfect pre-wired connecting block for use in 10, 20, and 36 inch Command Centers™. Using patented printed circuit board technology, the HC-110T-80 can distribute up to 4 incoming phone lines to up to 12 different locations in the home with no cross-connecting. For detailed schematics, please contact our Customer Service Department.

Part #	Description
HC-110T-80	Siemon Disconnect Phone Bridge includes two CO jacks, (one for interfacing with security systems [RJ31X] and one for use as an Auxiliary Disconnect Outlet [ADO]), and an ADO patch cord. Mounting and labeling hardware included. Light ivory



RELATED PRODUCTS DSL KIT PAGE 1.9, CT® COUPLERS 1.8, PATCH CORDS PAGE 3.2, DISCONNECT TEST ADAPTERS AND DISCONNECT PLUGS PAGE 4.4

DATA/VOICE DISTRIBUTION PANEL (FULL SIZE)



The data/voice distribution panels are used for a combination of voice and data distribution and can be installed in 10, 20, and 36 inch Command Centers™. The HC-110-JP6-80 allows voice and data distribution to be accomplished with one panel. It combines a 50-pair S110® connecting block and 6 modular jacks on one full size panel. This panel can distribute up to 4 incoming phone lines to up to 11 locations and can terminate network cables from 6 locations. The HC-110-JP12-80 can be used as the main distribution panel for modular key systems, PBX switches, or a data network.

Part #	Description
HC-110-JP6-80	The combination of a Siemon 50-pair S110® field termination block and a Siemon S110® 6-port T568A wired modular jack panel functions as a pre-wired distribution block for voice and data applications. Includes two CO jacks, (one for interfacing with security systems [RJ31X] and one for use as an Auxiliary Disconnect Outlet [ADO]), and an ADO patch cord. Mounting, connecting, and labeling hardware included. Light ivory



HC-110-JP12-80	Siemon 12-port T568A wired S110® modular jack panel functions as a pre-wired distribution block for data and/or voice. Mounting and labeling hardware included. Light ivory
----------------	---



RELATED PRODUCTS DSL KIT PAGE 1.9, CT® COUPLERS 1.8, PATCH CORDS PAGE 3.2

12-PORT DATA DISTRIBUTION PANEL (HALF SIZE)



The half size panel can be installed in 20 and 36 inch Command Centers™ and distributes data to up to 12 locations when fully populated with MAX™ modules. It is also designed to accommodate the mounting of a 4- or 6-port mini-hub. MAX™ modules must be ordered separately.

Part #	Description
HC-MOD12-80	Distributes data to up to 12 locations when fully populated with MAX™ modules and hub (hub not supplied). Mounting and labeling hardware included. Light ivory
<i>Accommodates hubs up to 127mm (5 in.) long x 76.2mm (3 in.) wide x 50.8mm (2 in.) high</i>	



RELATED PRODUCTS FLAT MAX™ MODULES PAGE 1.8

36-PORT DATA DISTRIBUTION PANEL (FULL SIZE)

The full size panel can be installed in 10, 20, and 36 inch Command Centers™ and distributes data to up to 36 locations when fully populated with MAX™ modules. It is also designed to mount various types of active equipment. MAX™ modules must be ordered separately.

Part #	Description
HC-MOD36-80	Distributes data to up to 36 locations when fully populated with MAX™ modules and hub (hub not supplied). Mounting and labeling hardware included. Light ivory
<i>Accommodates hubs up to 304.8mm (12 in.) long x 76.2mm (3 in.) wide x 50.8mm (2 in.) high</i>	



RELATED PRODUCTS FLAT MAX™ MODULES PAGE 1.8

36-PORT MAX™ UTILITY PANEL (FULL SIZE)

The full size panel can be installed in 10, 20, and 36 inch Command Centers™ and provides a high density solution for a variety of multi-media (UTP, coax, etc.) applications. It can be custom configured using the full line of MAX™ modules.

Part #	Description
HC-MAX36-80	36-port MAX™ utility panel. Distributes data to up to 36 locations when fully populated with MAX™ modules. Mounting and labeling hardware included. Light ivory



RELATED PRODUCTS FLAT MAX™ MODULES PAGE 1.8

BLANK SHELF PANEL (FULL SIZE)

The full size blank shelf panel can be installed in 10, 20, and 36 inch Command Centers™ and can accommodate various sizes of active equipment (i.e., hubs, cable modems, multiplexers, etc.)

Part #	Description
HC-SHLF-80	Blank shelf panel. Mounting hardware included. Light ivory
<i>Accommodates active equipment up to 304.8mm (12 in.) long x 76.2mm (3 in.) wide x 50.8mm (2 in.) high</i>	



RF DISTRIBUTION PANEL (FULL SIZE)

The full size RF distribution panel can be installed in 10, 20, and 36 inch Command Centers™ and allows up to four 1 x 8 splitters to be mounted in one panel. The panel also allows the creation of a patch field, providing more flexibility to patch and cross-connect cables to different applications.

Part #	Description
HC-RF-FP-80	Full size blank RF distribution panel. Mounting and labeling hardware included. Light ivory



Part #	Description
HC-RF-8NS	Siemon 1 x 8 splitter operates from 5 MHz to 1 GHz. All threaded F-type ports are two way power passing. Printed circuit board design ensures consistent RF performance and high port-to-port isolation. (For use with HC-RF-FR-80)



Part #	Description
HC-RF-TC	75 ohms termination caps (bag of 25)

RELATED PRODUCTS F-TYPE CONNECTORS, BULKHEADS AND EZ-TWIST PAGE 3.4

RF DISTRIBUTION PANELS (HALF SIZE)

The half size distribution panels includes one HC-RF-8NS splitter and distribute RF signals to up to 8 locations. Using additional connecting hardware, they can be configured to support more advanced installations incorporating multiple video inputs.

Part #	Description
HC-RF-8HS-80	For use in 20 and 36 inch Command Centers™, this half size panel distributes 1 RF signal to up to 8 locations. Six open ports available for other applications. Mounting and labeling hardware included. Light ivory
HC-RF-8VS-80	For use in 10 inch Command Center™, this half size vertical panel distributes 1 RF signal to up to 8 locations. Mounting and labeling hardware included. Light ivory



HC-RF-8HS-80

RELATED PRODUCTS F-TYPE CONNECTORS, BULKHEADS AND EZ-TWIST PAGE 3.4

RF AMPLIFIER PANELS (HALF SIZE)

These RF amplifiers can be installed in 20 and 36 inch Command Centers™ and are ideal when longer cable runs or splitters require a stronger input signal. Siemon amplifiers are bi-directional with bandwidth from 5MHz to 1GHz, which allows cable modems and addressable cable systems to operate. They are powered via an F-Type connector coax jumper from the included transformer.

Part #	Description
HC-RF-4HA-80	1 x 4 amplified splitter with half panel, used to amplify inputs (8.5 dB) to up to four 1 x 8 splitters. Mounting hardware and label included. Light ivory



Part #	Description
HC-RF-1HA-80	1 x 1 amplifier (10 dB) with half panel. Mounting hardware and label included. Light ivory



RELATED PRODUCTS F-TYPE CONNECTORS, BULKHEADS AND EZ-TWIST PAGE 3.4

MAX™ MODULE KITS



MAX™ modules are for use with the 12- and 36-port Data Distribution Panel and the 36-port MAX™ Utility Panel.

The kits include 12 black, flat MAX™ modules with T568A/B wiring, termination caps, 4 modular cords, and black, blue, and gray icons for color coding.

Part # Description
 HC-MXT-FK-01 Tool-Less category 5e compatible module kit



HC-MX5-FK-01 Punch-Down category 5e module kit



HC-MX6-FK-01 Punch-Down category 6 module kit



HC-MXT-FK-01 Kit

MAX™ Blank Modules:

Blank inserts are available for unused ports.

Part # Description
 MX-BL-01 Pack of 10 blank modules, black



HC-MX5-FK-01 & HC-MX6-FK-01 Kit

Note: For detailed specification information on MAX™ modules, see pages 2.6 through 2.9

Kit contents are also available individually. Contact our Customer Service Department for more information

**At the time of printing, category 6/class E specifications were under development by TIA/EIA and ISO/IEC.*

RELATED PRODUCTS 12- AND 36-PORT DISTRIBUTION PANELS, 36-PORT MAX™ UTILITY PANEL PAGE 1.6, MODULAR CORDS PAGE 3.2, TERMINATION TOOLS 4.5

CT® COUPLERS



CT® couplers are for use with the Disconnect Phone Bridge Voice Panel, the S110® Voice Distribution Panel, and 6- and 12-port Data/Voice Distributions Panels.

CT® 5e Coupler:

The engineering innovations used in the design of the CT® 5e couplers ensure full-featured, end-to-end category 5e connectivity.

Part # Description
 CT-F-C5-C5-80 Flat, double coupler, universal T568A/B wiring. Light ivory



CT® Coax Coupler:

For terminating coaxial cables at the distribution device, Siemon's coax CT® coupler uses flat F-Type adapters. They also include a space for using color coded icons to identify type of service.

Part # Description
 CT-FA-80 Flat coupler with 1 F-Type adapter. Light ivory



CT® RJ31X Coupler:

The flat CT® dual RJ31X coupler splits incoming phone service to two individual USOC wired jacks, allowing one for interfacing with security systems and one for use as an Auxiliary Disconnect Outlet (ADO).

Part # Description
 CT-02-02-80 Flat, RJ31X double coupler. Light ivory



CT® Blank Coupler:

Blank inserts are available for unused ports.

Part # Description
 CT-BLNK-80 Flat blank coupler. Light ivory



RELATED PRODUCTS DISCONNECT PHONE BRIDGE PANEL, S110® VOICE DISTRIBUTION PANEL, 6- AND 12-PORT DATA/VOICE DISTRIBUTION PANEL PAGE 1.5

DSL KIT

The DSL connecting kit delivers high speed internet access from DSL point of entry to the home network.

Part #	Description
HC-DSL-K	DSL kit includes one flat, single category 6 CT® coupler, light ivory, and one 0.91m (3 ft.) DSL patch cord (blue jacket and blue boot)

Refer to application guide for detailed installation instructions



COMMAND CENTER™ LOCK KIT

The Command Center™ Lock Kit is a field installable lock intended to provide additional security and discourage unauthorized entry into the enclosure. For use with the 20 and 36 inch Command Center™ enclosures.

Part #	Description
HC-LOCK	Lock, latch and keys

RELATED PRODUCTS COMMAND CENTER ENCLOSURES PAGE 1.3 — 1.4



REUSABLE HOOK AND LOOP CABLE MANAGERS

These cable managers are simple to use and extremely effective when used to bundle cables. To accommodate different sized bundles, they are available in 152mm (6 in.), 305mm (12 in.), or 457mm (18 in.) lengths. They can be easily removed to service cable and reinstalled when the cables are rebundled. The handy dispenser rolls/spools are neat, convenient and quick. Adjustable tension prevents "over-cinched" conditions. Fits through lance tabs in Command Centers™.

Part#	Description
VCM-100-(XXX)-(X)	Roll of 10 cable managers (order quantity of 10 for 1 roll of 10)
VCM-500-(XXX)-(X)	Roll of 50 cable managers (order quantity of 50 for 1 roll of 50)
VCM-2500-(XXX)-(X)	Spool of 250 cable managers (order quantity of 250 for 1 roll of 250)

Use (XXX) to specify length:
 060 = 152mm (6 in.), holds 51mm (2 in.) diameter cable bundle
 120 = 305mm (12 in.), holds 102mm (4 in.) diameter cable bundle
 180 = 457mm (18 in.), holds 153mm (6 in.) diameter cable bundle

Use (X) to specify color:
 1 = black, 2 = white, 3 = red, 4 = gray, 5 = yellow, 6 = blue, 7 = green, 9 = orange



Wrap-around cable managers offer a simplified approach to cable management... secure it to a single cable and then wrap it around the entire bundle



Hook and Loop cable managers have a large head for added strength. A mounting hole is included for securing to a wall or rack

ACCESSORIES

Additional plastic grommets are available for protecting cables entering the Command Center™ enclosures.

Replacement Ny-latches are available for securing panels within the Command Center™ enclosures in the event that Ny-latches supplied with the panels become damaged or lost.

Part #	Description
HC-GRMT	Grommets. Bag of 10



Part #	Description
HC-NYL	Ny-latches. Bag of 20



RELATED PRODUCTS COMMAND CENTER ENCLOSURES PAGE 1.2 — 1.4, DISTRIBUTION PANELS PAGES 1.5 — 1.7