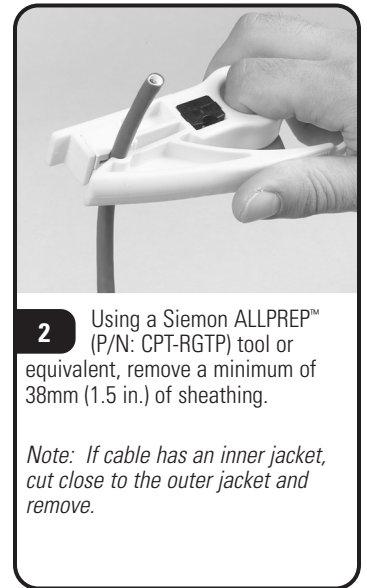


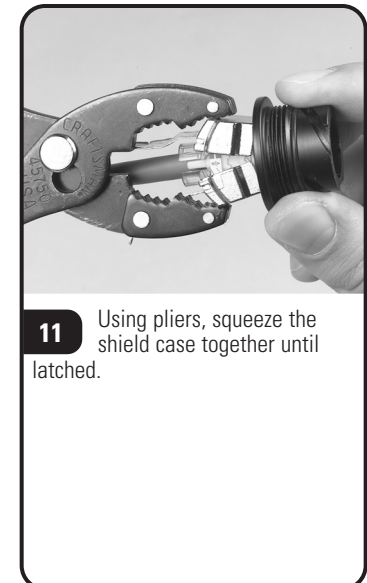
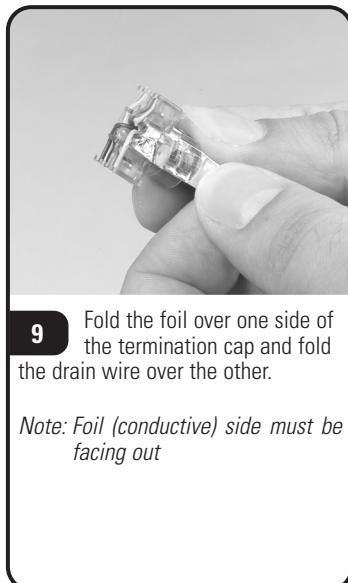
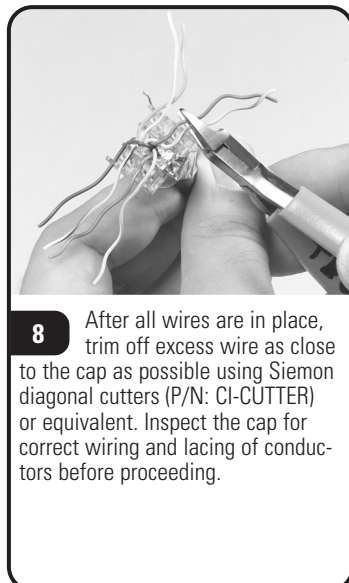
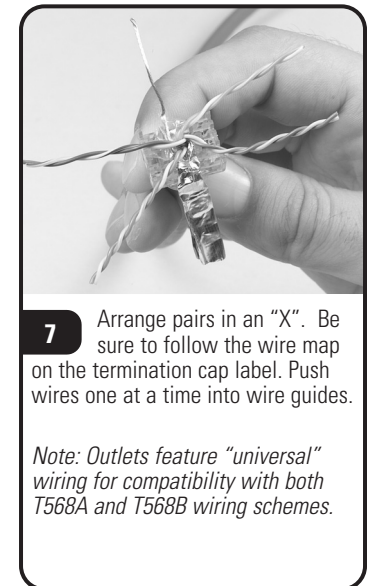
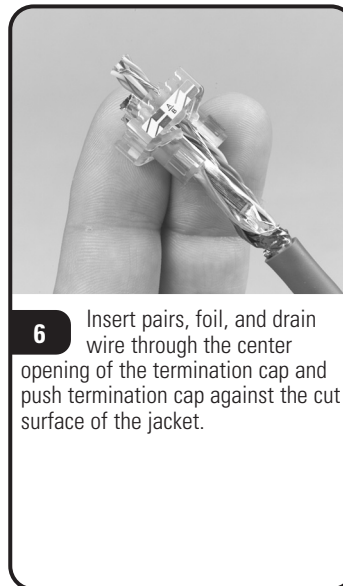
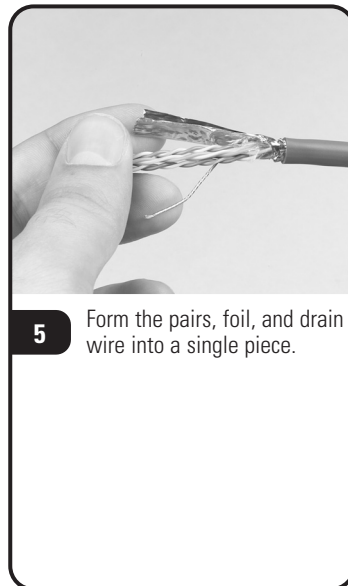
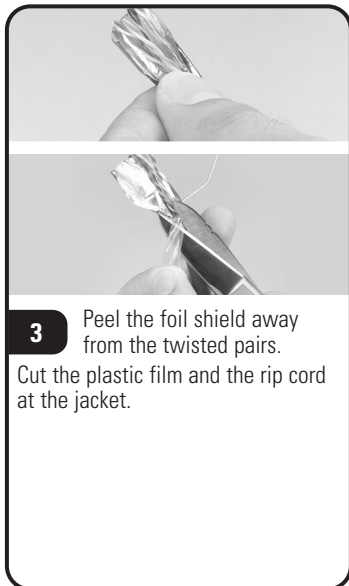
Industrial MAX[®] 5e Screened Outlet Instructions



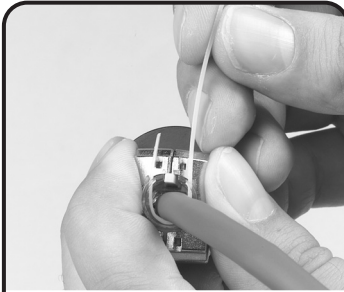
1 Product includes: Screened outlet, termination cap, panel gasket, panel nut and tie wrap.

2 Using a Siemon ALLPREP[™] (P/N: CPT-RGTP) tool or equivalent, remove a minimum of 38mm (1.5 in.) of sheathing.

Note: If cable has an inner jacket, cut close to the outer jacket and remove.



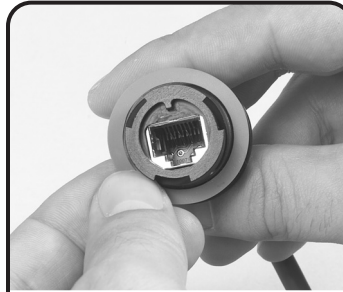
Industrial MAX[®] 5e Screened Outlet Instructions



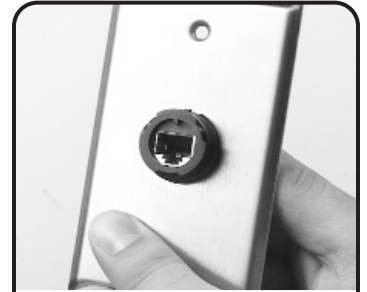
12 Insert the tie wrap into the termination cap through slots in the cap. Tie wrap should form a "U" shape inside the cap.



13 Tighten the tie wrap. Trim excess tie wrap, foil, and drain wire.



14 Place the panel gasket against the flange of the outlet.



15 Push the outlet through the faceplate (XFP-S-01-SS) or bulkhead hole. Be sure the faceplate keyway is properly aligned.

Alternate mounting method: When mounting the Siemon Industrial Outlet in a custom application, the following mounting requirements apply.
Through hole diameter - 27mm (1.063)in.
Panel thickness - .89-3mm (.035-0.120)in.



Fixed Optional Dustcap Installation

12 For fixed installation of optional dustcap (X-CAP) place securing ring over the outlet and flat against the faceplate

Note: If not installing optional dust cap skip to step 14.



Fixed Optional Dustcap Installation

13 Place flat washer over securing ring.



14 Place the panel nut over the flange and tighten to 1.69-2.26 N-m (15-20 in-lbs).



Dustcap Retrofit

16 To retrofit optional dustcap (X-CAP) place the securing ring over the panel nut flush to the faceplate. Rotate the securing ring 1/8 of a turn.

To assist safe installations, comply with the following:

- A. Use caution when installing or modifying telecommunications circuits.
- B. Never touch uninsulated wire terminals unless the circuit has been disconnected.
- C. Never install this device in a wet location.
- D. Never install wiring during a lightning storm.

IP67 rating can only be achieved when using an IP67 rated enclosure with a properly terminated Siemon Industrial Plug (XP85) or Siemon Industrial Outlet cap (X-CAP).

Siemon — Australia
Sydney, Australia
Tel: (61) 2 9452 2666

Siemon — China
Beijing, P.R. China
Tel: (86) 10 6559 8860

Siemon — Germany
Frankfurt, Germany
Tel: (49) (0) 69 97168 184

Siemon — Latin America
Coral Gables, Florida USA
Tel: (1) 305 446 9150

Siemon — Southeast Asia
Singapore
Tel: (65) 345 9119

Siemon — USA
Watertown, Connecticut
Tel: (1) 866-548-5814

Siemon — Canada
Markham, Ontario
Tel: (1) 905 940 9223

Siemon — France
Paris, France
Tel: (33) 1 46 46 11 85

Siemon — Italy
Milano, Italy
Tel: (39) 02 64 672 209

**Latin American Sales
Manufacturer's Reps**
Castroville, Texas USA
Tel: (1) 830 538 6375

Siemon — UK
Woking, England
Tel: (44) (0) 1483 480040

 **SIEMON**
www.siemon.com